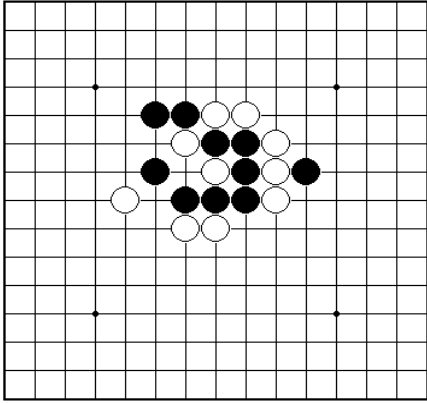


# 連珠10級(例)

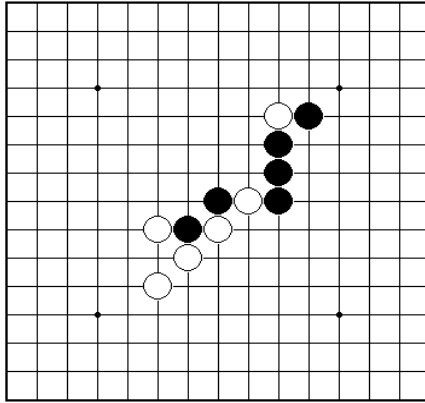
表面

1. 黒次の1手は？(攻めるか、守るかを考えてください)

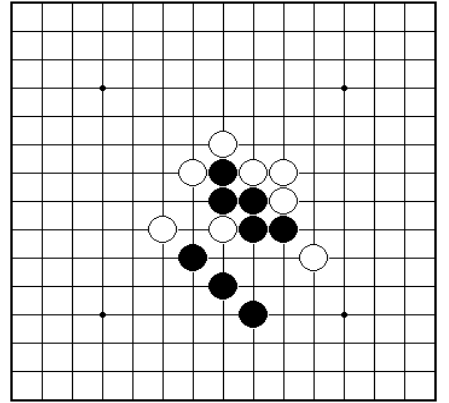
①



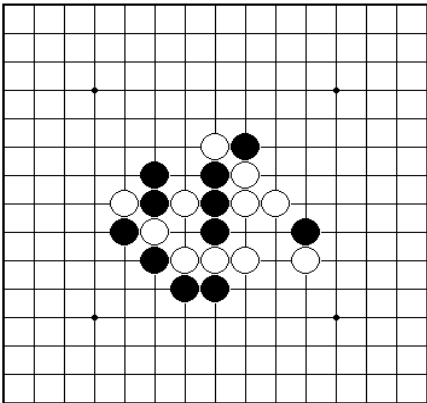
②



③



④



## 級位認定の目安

(1) 20問中16問以上正解で10級

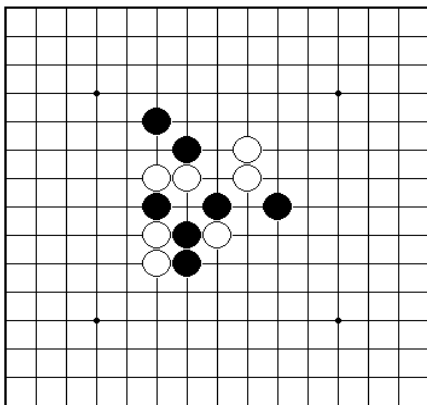
この問題は級位認定の目安となるものです。

実際の級位認定は級位認定権を持っている人が行います。

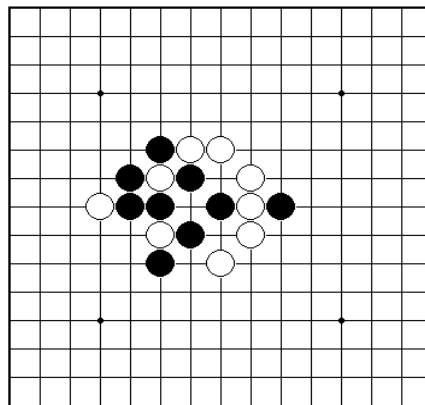
作成: 公益社団法人日本連珠社 普及推進委員会

公益社団法人日本連珠社HP: <http://www.renjusha.net/>

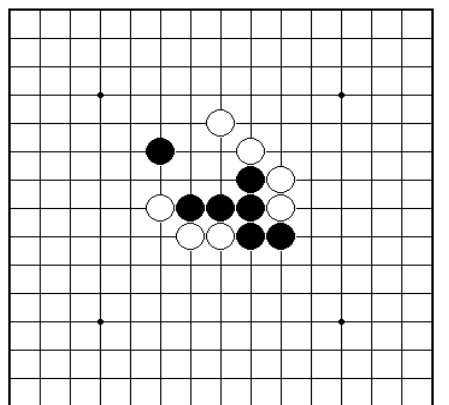
⑤



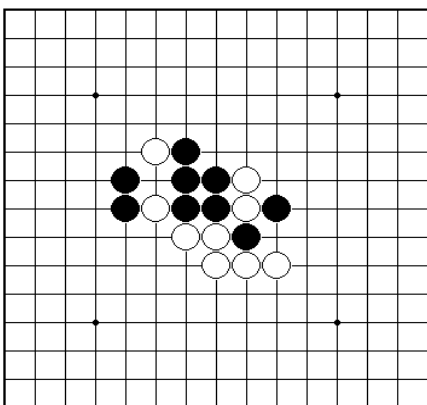
⑥



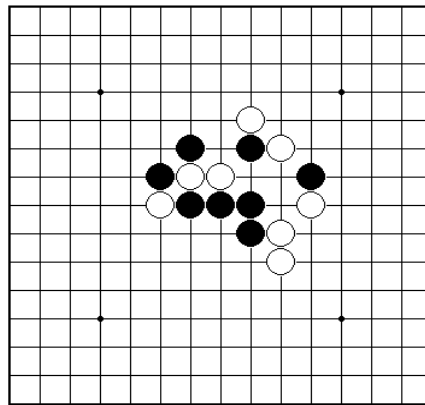
⑦



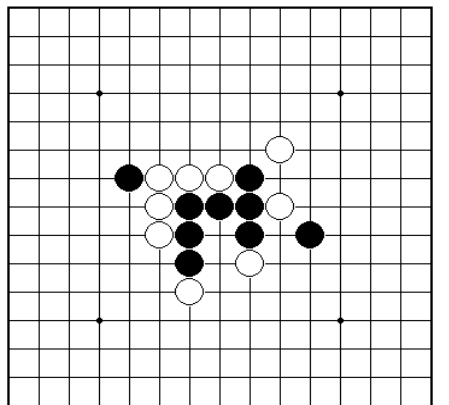
⑧



⑨



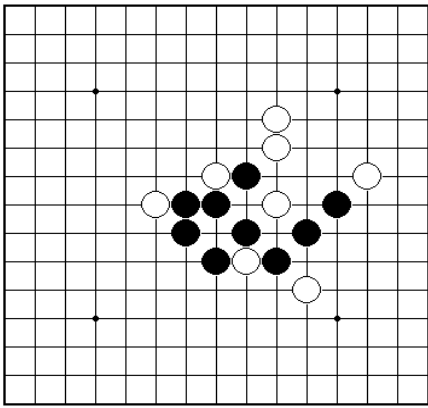
⑩



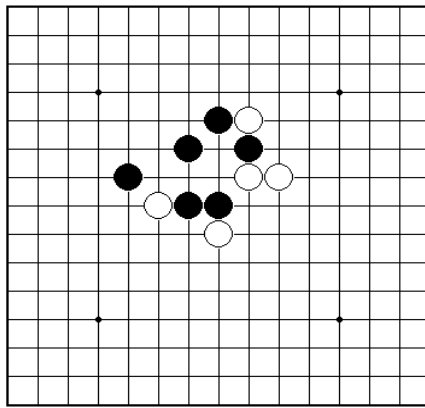
2. 白次の1手は？(攻めるか、守るかを考えてください)

裏面

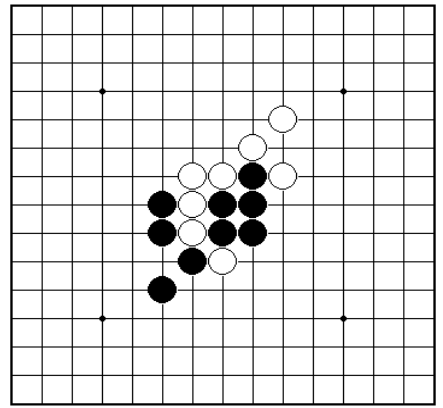
①



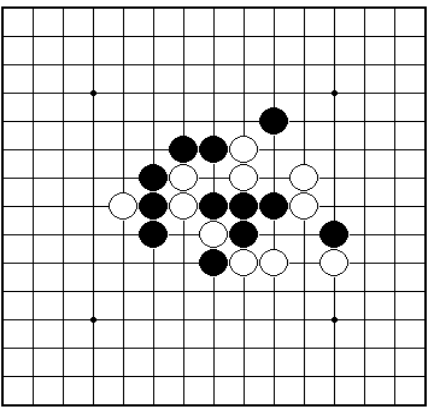
②



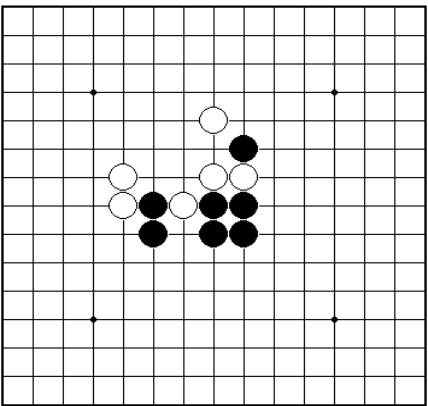
③



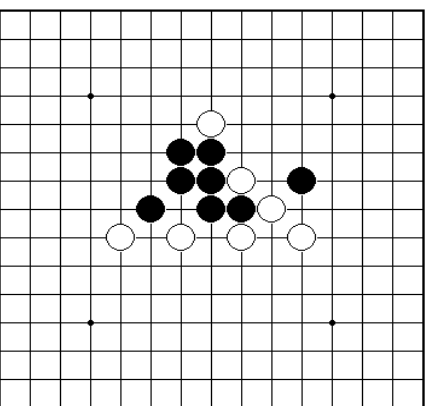
④



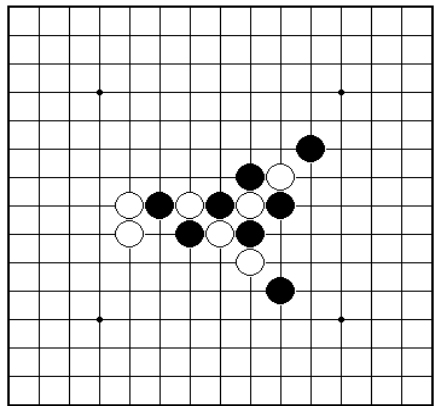
⑤



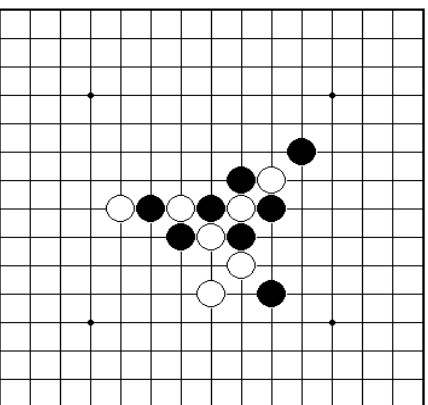
⑥



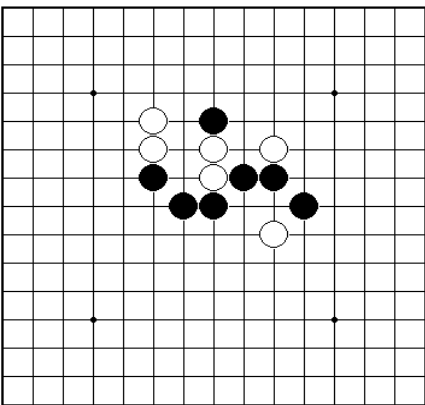
⑦



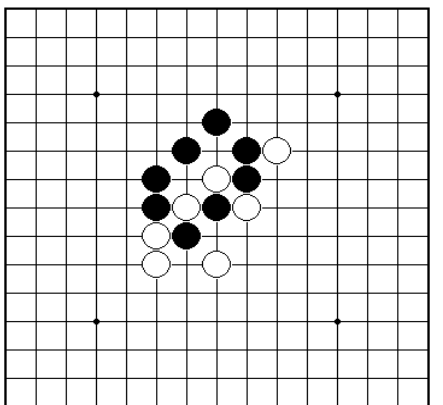
⑧



⑨



⑩



表面に問題有り